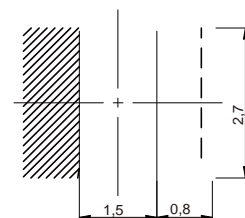


SMD Shielded Tiny Power Inductor Size 3012

- Magnetic resin for higher current and semi-magnetically shielded
- Quantity: 2000pcs
- DC/DC converter
- LC filter

Dimensions: [mm]

Land Pattern: [mm]



Electrical Properties:

	Tolerance	Saturation		
		(μ H)	(A)	(m ²)
		3.00	2.90	21
		2.20	2.20	33
		2.05	2.10	40
		1.90	2.00	48
		1.62	1.85	55
		1.50	1.70	68
		1.20	1.55	75
		1.05	1.35	100
		0.90	1.25	120
		0.80	1.10	160
		0.75	1.00	190
		0.60	0.89	265
		0.45	0.72	430
		0.42	0.55	630
		0.35	0.45	800
		0.36	0.46	875
		0.27	0.35	1450

Operating temperature: -40°C ~ +125°C

Temperature rise current: the actual value of DC current when the temperature rise is $\leq 40^\circ\text{C}$

Saturation Current that will cause initial inductance to drop approximately 30%

